



Adoption Connection, PA
Families Grow Here.

One Church One Mission

A program of Adoption Connection, PA

700 Turnpike St.

Beaver, PA 15009

724-371-0671

<http://www.adoptionconnectionpa.org>



**ONE CHURCH ONE MISSION
IMPLEMENTATION TEAM**

Robin Thompson

Executive Director

rthompson@adoptionconnectionpa.org

Virginia Householder

Family Recruitment

and Outreach Supervisor

vhouseholder@adoptionconnectionpa.org

Jackie Pleska

Family Recruitment

and Outreach Coordinator

jpleska@adoptionconnectionpa.org

Rev. Chad Bogdewic

Family Recruitment

and Outreach Coordinator

cbogdewic@adoptionconnectionpa.org

ONE CHURCH ONE MISSION

OVERVIEW

What Is It?

A Faith-Based initiative of Adoption Connection, PA (ACPA) to recruit and support children in foster care in need of loving home and supporting those who choose to foster.



What is Foster Care?

Foster care is a temporary placement for children needing out-of-home care due to abuse or neglect. Resource families provide a safe and nurturing home and are committed to working with birth families to reunite children with their parents when it is safe.

What Do Resource Families Do?

Provide temporary care, love, and nurturing to a child and serve as a mentor, actively helping parents improve their ability to safely care for their children. Stay connected and assist in the transition to reunification, legal guardianship, or adoption to another family.

Basic Requirements to Be a Resource Home



- You must have the ability to love, understand, care for, and accept a child to whom you did not give birth.
- You can be single, married, separated or divorced.
- You must be at least 21 years of age.
- You may own or rent your home.
- You must have the ability to manage personal and household financial needs without relying on the foster care reimbursements.
- You must have a working vehicle and phone.
- All members of the household who are 18 years of age or older, must submit to background checks including child welfare records and fingerprints.
- You must provide appropriate sleeping arrangements for each child placed.
- You must attend initial and annual trainings.

The Core Elements of the One Church One Mission Programs Includes the Following:

- ACPA collaborates with communities of faith (COF) as they identify potential resource parents willing to care for at least one child;
- Provide training for leaders of COF, parents, COF coordinators and others;
- Partner with county with which ACPA has contracts;
- ACPA and COF provide support to foster and adoptive parents before and after placements

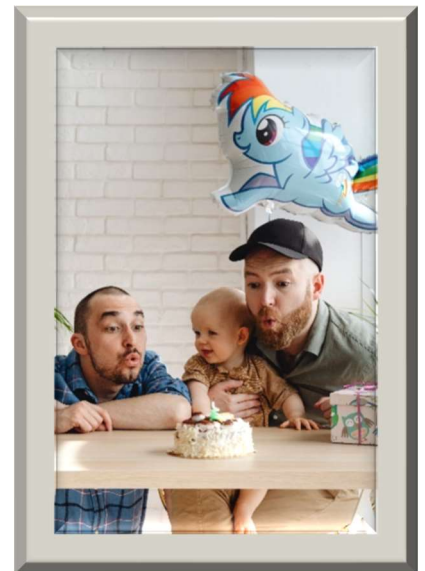
Program Rationale

There are around 15,000 children and youth in foster care in Pennsylvania, but not enough resource homes. One Church One Mission works with churches, synagogues, mosques, temples, and other COFs to recruit and support resource families. Fostering may seem daunting and lonely, but with a community of faith surrounding the family to better help resource families and the kids placed with them. Through this initiative, they can get the needed support to make the temporary placement successful.

Implementation

In the One Church One Mission program, the COF would work in tandem with ACPA. The agency will provide and/or coordinate training for the faith community on foster care, requirements, needs, mental health care, and so on. ACPA will provided the needed support for the resource family and the placed child, through monthly stipends, trainings, professional support, placements, mediation, etc.

The community of faith will work to find caring families/individuals who are able and willing to provide foster care services and feel called to do so. Additionally, the community of faith will provide support for the family and the children/youth placed with them in ways that are able to.



Such opportunities can include:

- Pray
- Mentor/tutor a child
- Volunteer
- Provide respite care
- Sponsor a monthly support group for resource and adoptive parents
- Share the knowledge and resources that One Church One Mission and Adoption Connection, PA offers
- Provide transport for the child or the family
- Offer encouragement and support to those individuals in your congregation who are foster parents or those who have adopted a child
- Make a monthly and/or yearly financial commitment to Adoption Connection, PA



As each congregation is different and has various polities followed, one single model may not work for every community of faith. It is recommended that a point person or chairperson lead a OCOM board, either as a committee or part of an existing committee (e.g. mission committee). People on this team should be of sound character, have a heart for children, be able to pass background checks, and willing to be trained on the realities of foster care and the needs/requirements to be a resource family/home.

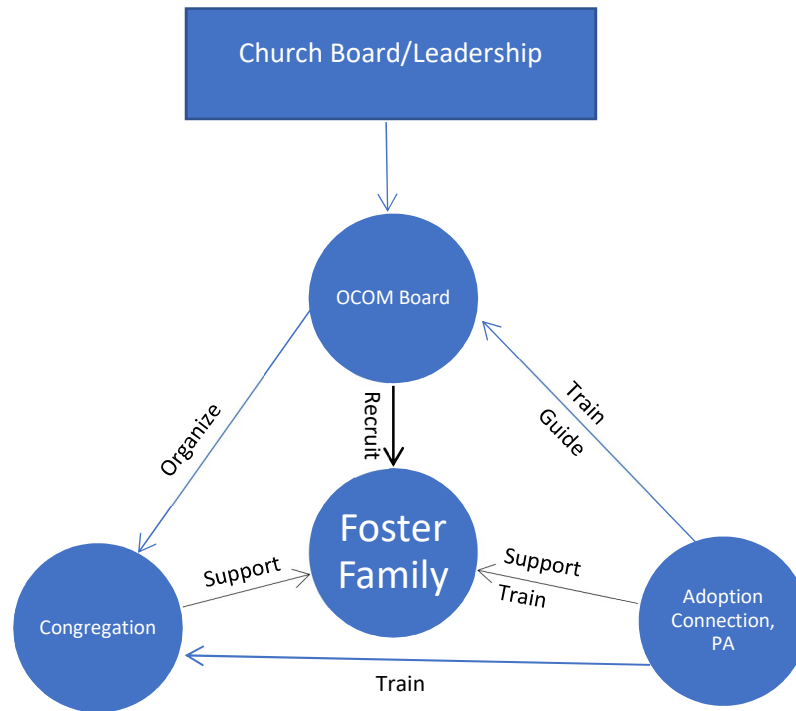


Since some communities of faith may not be large enough to implement the program by themselves, this program may be implemented across multiple churches, through ministeriums or by way of denominational bodies, including districts, parishes, dioceses, presbyteries, etc. For those that use this method of implementation, it is recommended that it be led by a representational leadership board made up by various members of the congregations.

The board shall lead efforts to recruit resource families and volunteers to offer care to the children/youth in foster care. Adoption Connection, PA shall oversee the resource family as they care for the children/youth in their care, while the board oversees the volunteers who may recruit, pray, fundraise, mentor, etc. Adoption Connection, PA and the board will keep each other informed regarding any issues, concerns, or needs.

Examples of Implementation Models

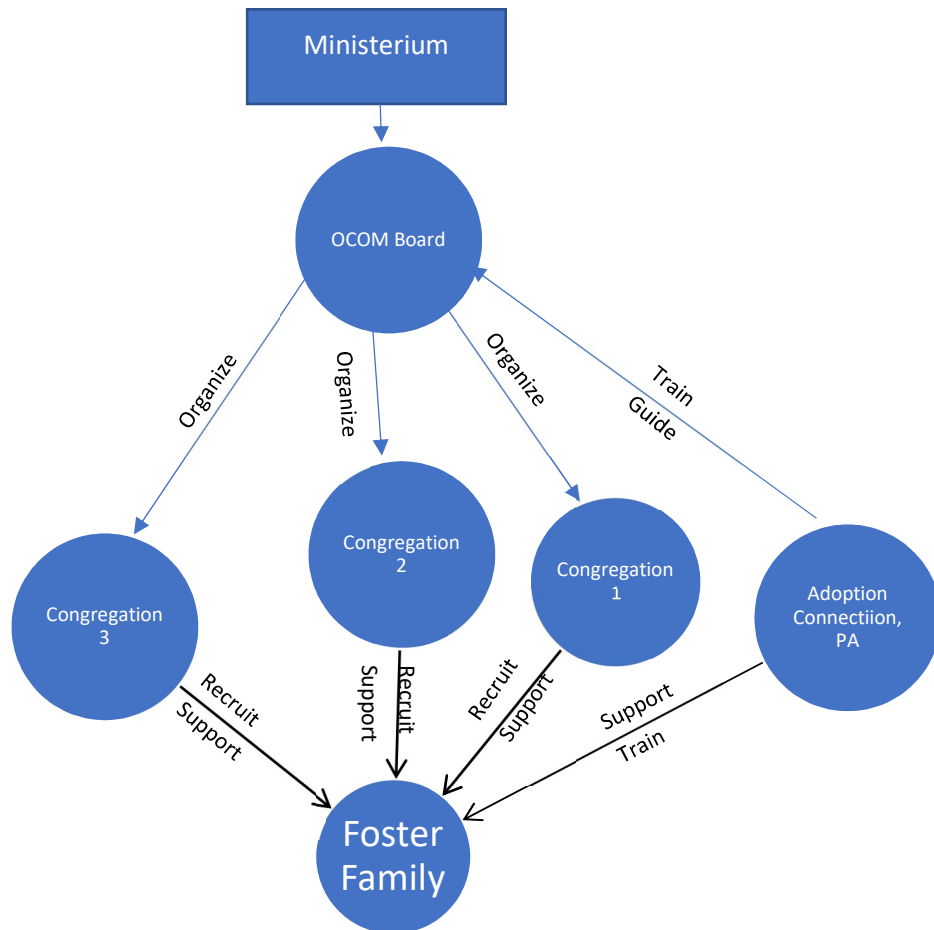
Single Church Model



In this model, church leadership (Church Council, Session, Elders, etc.) would put together a One Church One Mission Board. Adoption Connection, PA will train and guide this board to help them understand the importance of fostering, regulations, etc. This board would then recruit a family who feels called to be a resource parent and can meet the various criteria.

The board would then recruit volunteers (who have their clearances) from the congregation who will support the resource family and the child in foster care through prayer, meals, respite, or any other way that they may be able to help support everyone. Adoption Connection, PA will support the family through case management and other clinical ways that are needed and appropriate, as well as train the resource parents prior to and during placement.

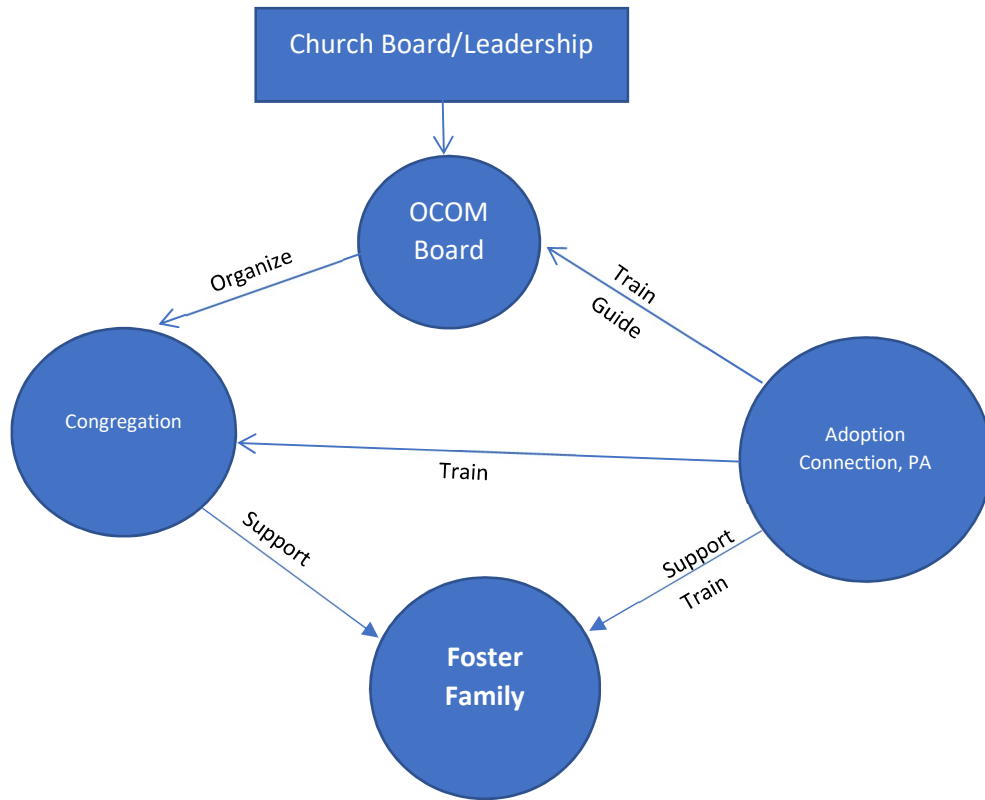
Ministerium Model



In this model, a denominational, ecumenical, or inter-faith collaborative would put together a One Church One Mission Board. Adoption Connection, PA will train and guide this board to help them understand the importance of fostering, regulations, etc. This board, with the help of the member congregations, would then recruit a family who feels called to be a resource parent and can meet the various criteria.

The board would then assign a point person in each of their congregations/worship centers who will, with the help of the board and their congregational leader (Pastor, Imam, Rabbi, etc.), recruit volunteers (who have their clearances) from their congregations who will support the resource family and the child in foster care through prayer, meals, respite, or any other way that they may be able to help support everyone, as so organized by the board. Adoption Connection, PA will support the family through case management and other clinical ways that are needed and appropriate, as well as train the resource parents prior to and during placement.

Missional Model



In this model, church leadership (Church Council, Session, Elders, etc.) would put together a One Church One Mission Board. Adoption Connection, PA will train and guide this board to help them understand the importance of fostering, regulations, etc. This board would then connect with a family outside of their congregation who feels called to be, or is currently, a resource parent and can meet the various criteria.

The board would then recruit volunteers (who have their clearances) from the congregation who will support the resource family and the child in foster care through prayer, meals, respite, or any other way that they may be able to help support everyone. Adoption Connection, PA will support the family through case management and other clinical ways that are needed and appropriate, as well as train the resource parents prior to and during placement.